

Technical data sheet

All right reserved Landa illuminotecnica S.p.A.
will reserve to change the specific note without
any written notice.

LANDA[®]
illuminotecnica

Wall Mira 60

Article 4196L7.INX Cold White 4196L7H.INX Warm White
Product type: recessed wall light
Body material Anodized aluminium AW 6060
Tempered glass diffuser in sand blasted finish 5mm thick and silicon gasket.
Recessed box is in a high density polyethylene with a security ring in nylon material loaded with 30% glass fibre.
Ring in Aluminium AW 6060 anodized in stainless steel color
700mA <u>Transformer not included</u>

IK08

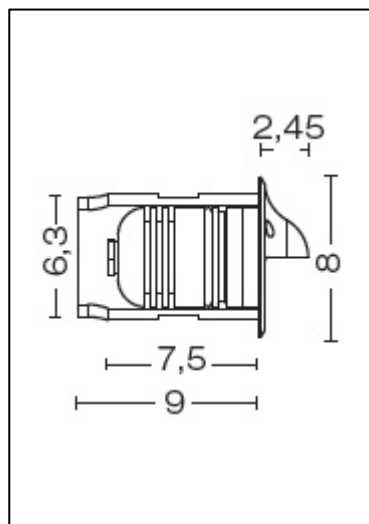
IP66

Powered by Seoul Semiconductor
LED 7W

Cold White	570lm	6000°k
WarmWhite	450lm	3000°k

IP₆X

IPX6

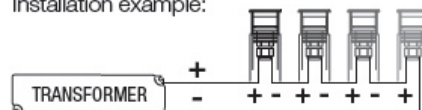


Accessories on request:

electronic Transformer for **1 LED** cod. 0409BT011 – 11V 700mA IP67

electronic Transformer from **2 to 4 LED** cod. 0409BT010 – 48V 700mA IP67

Installation example:



Photometric

